



## Unit 2: HUMANS AND THE ENVIRONMENT

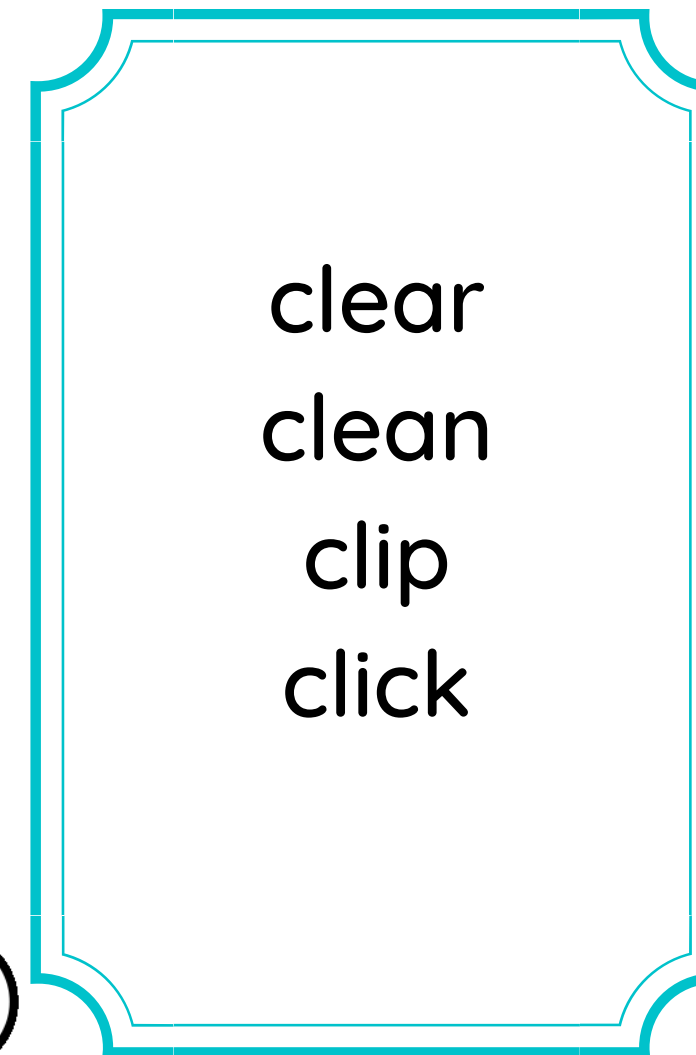
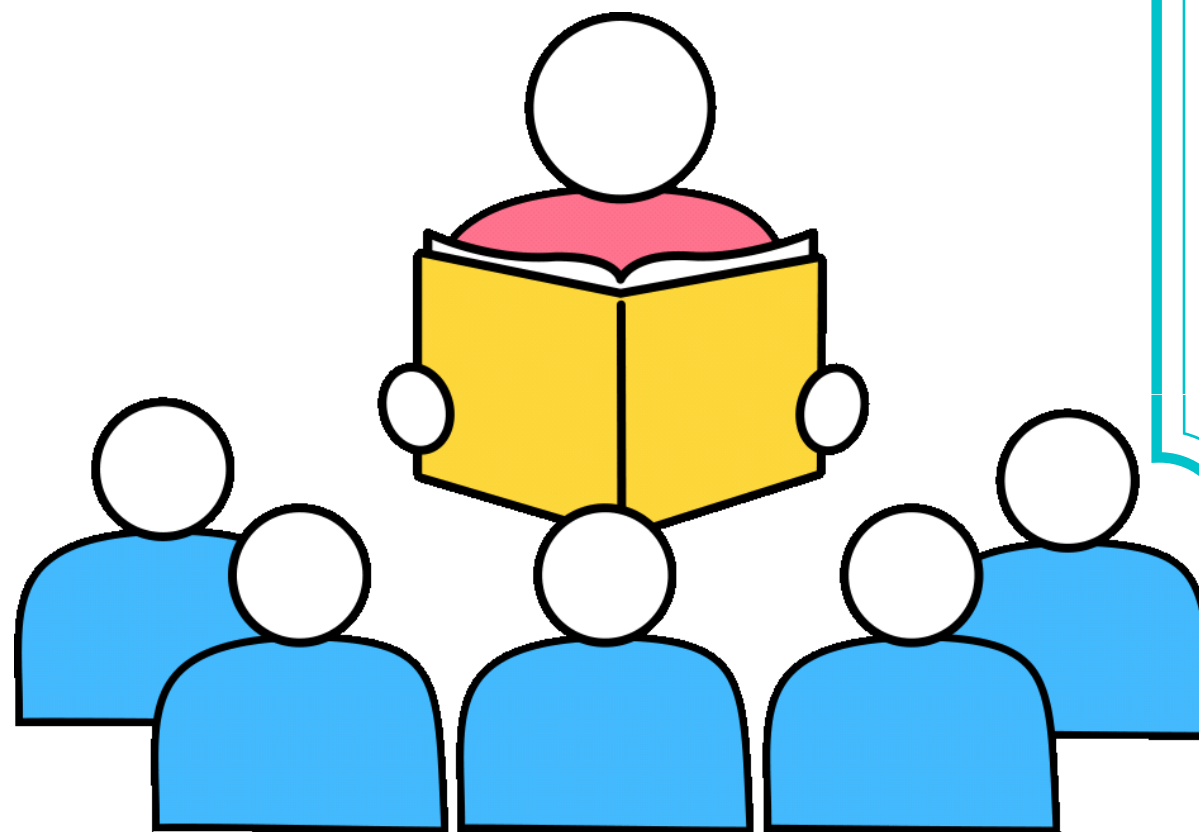
# PRONUNCIATION

**/KL/, /PL/, /GR/ AND**

**/PR/**

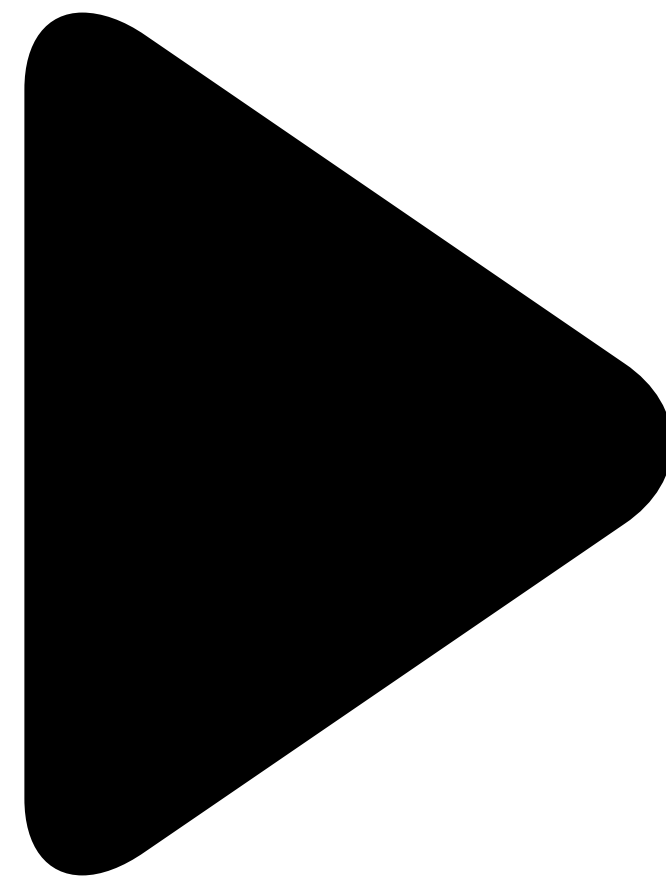


**class**





Play

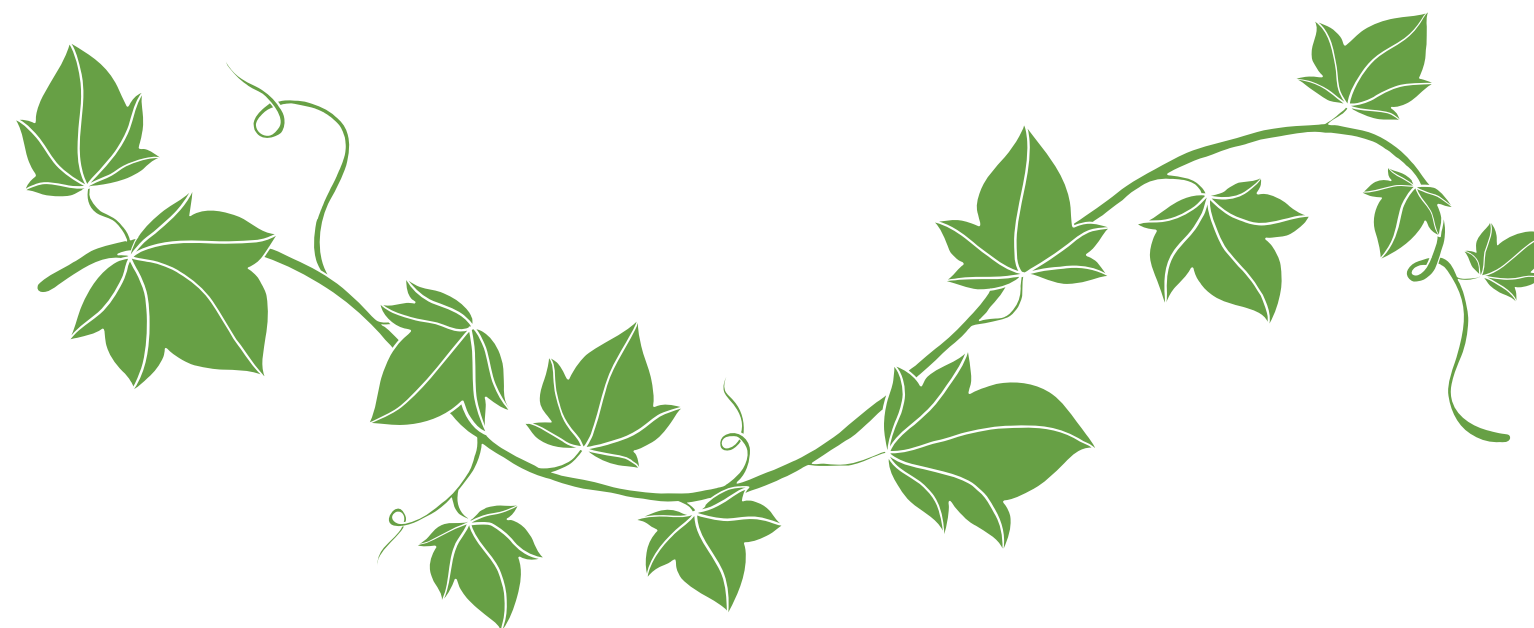


Play  
place  
please



/gr/

/green/



Grape  
green  
group



/pr/

/present/



Present  
practice  
probi

Listen and repeat, pay attention to consonant blends /kɫ/, /pl/,  
/gr/, /pr/

<b><i>/kɫ/</i></b>	<b><i>/pl/</i></b>	<b><i>/gr/</i></b>	<b><i>/pr/</i></b>
club	please	green	practise
clean	place	group	present
class	play	ground	protect